

Specialty Materials

Epoxy preprag, Adhesive & Composite

Product list



Phenoxy Resin / PKHH

High Tg Epoxy Resin

Curing Agents

Flame Retardants

Polymer & materials

Silane Coupling Agent

WWW.SEECHEM.COM

Tel : +82 2-6241-0288

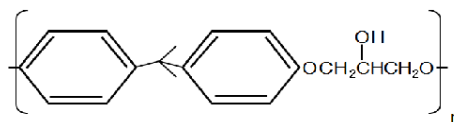
Fax : +82 2-6241-0289

E-mail : mail@seechem.com

Phenoxy Resin / PKHH , PKHP-200

Phenoxy resin have excellent adhesion to glass and carbon fibers. Phenoxy sizings enable excellent compatibility with epoxy-based matrix resins, and with vinyl ester based resins.

- Application: Coatings, Inks, Adhesives, Composites, Plastics, Electronics, Films, Fibers
- Main Properties : Hardness, Impact Resistance, Vapor Barrier, Tough Flexibility, Chemical Resistance, Adhesive to Different Substrate, Abrasion Resistance, Heat Resistance, Compatibility



Product	Phenoxy Resin
CAS Number	25068-38-6
Mw (av.), daltons	32,000 – 60,000
Appearance	Granule / Powder

Epoxy Resin

Glyether@MFN-3000 is a polyfunctional epoxy novolac resin, which is available as a solid.

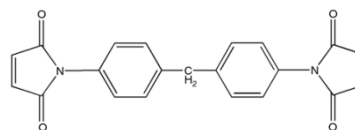
Product	APPLICATION
MFN-3000	Electrics, CCL, FCCL, BAG package
MFN-3000EK80	Electrics, CCL, FCCL, BAG package

HIGH Tg Special , THPE type Epoxy Resin

Product	APPLICATION
EJ-3350	Electrics, Adhesive, CCL, EMC

Bismaleimide

BMI is a bismaleimide resin that cures via an additional / free radical mechanism resulting in a cross-linked thermoset system with no condensation by-products.

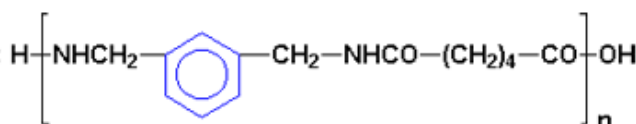


Product	Chemical name	CAS
BMI	4,4'Diphenylmethane bismaleimide	13676-54-5
BMI-70	Bis (3-Ethyl-5-Methyl-4 Maleimidephenyl Methane	105391-33-1
BMI-80	2,2'-Bis[4-(4-Maleimide phenoxy)Phenyl propane	79922-55-7
BMI-122	Polyphenyl methane bismaleimide	
BMI-400	Resin based on Discitraconimide 70% in MEK	

Special Amine

One of the most important feature of MXD6 is that it has the only best gas barrier property in all kinds of commercial nylon plastics, which can be used to limit access of oxygen and carbon dioxide, and then it is more widely used than EVOH, PAN and PVDC in practical application.

Product	CAS
MXD6	25718-70-1



Flame retardant

Flame retardant is used as an additive for epoxy resins and polycarbonates, as well as other engineering and high performance polymers. Flame retardant shows a great stability at high temperatures and a predominant hydrolysis resistance. It is mainly applied in high value-added products for electric & electronic and medical devices.

Chemical	CAS	Equivalent
Poly(bis(phenoxy)phosphazene) Oligomer	28212-48-8	SPB-100
Aluminum diethylphosphinate	225789-38-8	OP-935
Phenoxyphosphazene Oligomer		Rabittle FP100

MWCT (Multi-wall Carbon Nanotubes)

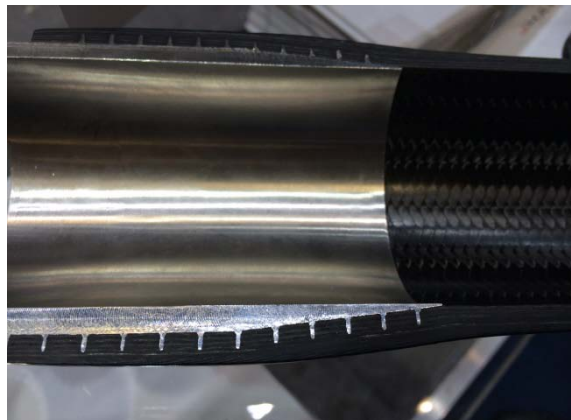
- Improve the impact resistance & shear resistance.
- Improve fracture toughness, tensile strength and flexural strength.
- Reduce weight of final fiber reinforced composite materials.

Product	Purity	Diameter	Length	Layer
S-Tube 100	97%	12 – 15 nm	3 – 15 um	8 – 15
S-Tube 120	97%	20 – 30 nm	3 – 15 nm	12 - 20
S-Tube 150	97%	12 – 15 nm	0.5 – 5 um	8 - 15
S-Tube 400	95%	80 – 150 nm	0.5 – 5 um	50 - 65
S-Tube 500	95%	50 – 200 nm	0.5 – 5 um	63 - 90

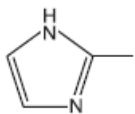
Silane Coupling Agent

We provide specialty-wise silane coupling agent according to user's requesting including all commodity silane grades.

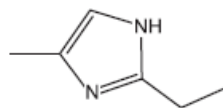
Product	Chemical name	CAS
FC-25	3-Isocyanatopropyltriethoxysilane	24801-88-5
FC-24	3-Isocyanatopropyltrimethoxysilane	15396-00-6
JH-O187	3-Glycidyoxypropyltrimethoxysilane	2530-83-8
JH-VP12	Vinyl silane oligomer	
JH-AP10	Amino silane solution	
JH-A110	3-Aminopropyltriethoxysilane	919-30-2
JH- A112	N-(2-Aminoethyl)-3-aminopropyltrimethoxysilane	1760-24-3
TEOS	Tetraethoxysilane	78-10-4



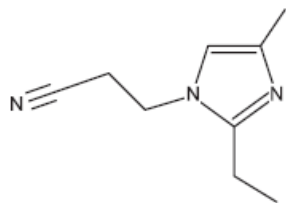
Imidazole



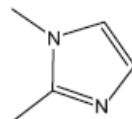
2MI
2-Methylimidazole
CAS : 693-98-1



2E4MZ
2-Ethyl-4-methylimidazole
CAS : 931-36-2



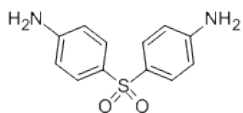
1CN2E4M
1-Cyanoethyl-2-Ethyl-4-methylimidazole
CAS : 23996-25-0



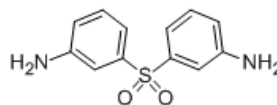
DMI
1,2-Dimethylimidazole
CAS : 1739-84-0

Epoxy Curing agent

• Sulfone type

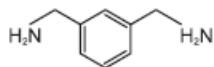


4,4' DDS
4,4'-Diamino Diphenyl Sulphone
CAS : 80-08-0

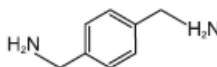


3,3' DDS
3,3'-Diamino Diphenyl Sulphone
CAS : 599-61-1

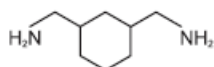
• Amine Type



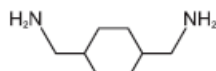
MXDA
1,3-BIS(AMINOMETHYL)BENZENE
CAS : 1477-55-8



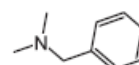
PXDA
1,4-BIS(AMINOMETHYL)BENZENE
CAS : 539-48-0



1,3-BAC
CAS : 2579-20-6

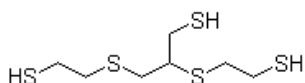


1,4-BAC
CAS : 2549-93-1

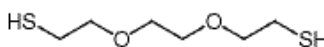


BDMA
CAS : 103-83-3

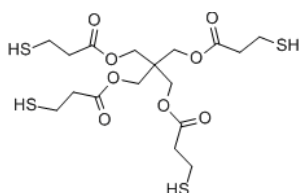
• Mercaptan Type



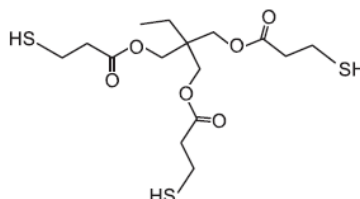
SCMDO
CAS : 131538-00-6



SCDO
CAS 14970-87-7

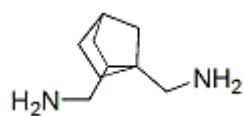


PETMP
CAS : 7575-23-7

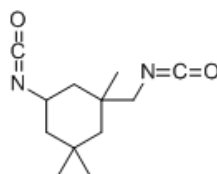


TMPMP
CAS : 33007-83-9

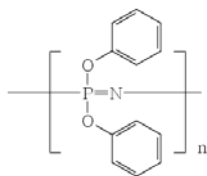
Specialty-wise materials



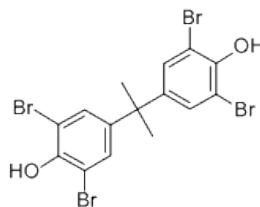
NBDA
CAS : 56602-77-8



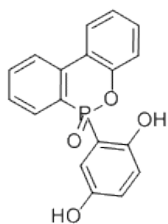
IPDI
CAS : 4098-71-9



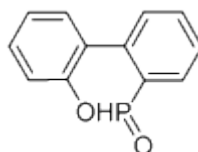
Poly(bis(phenoxy)phosphazene)
CAS : 28212-48-8



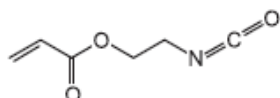
Tetrabromobisphenol A
CAS : 79-94-7



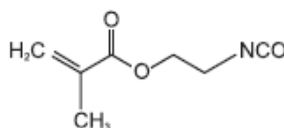
DOPO-HQ
CAS : 99208-50-1



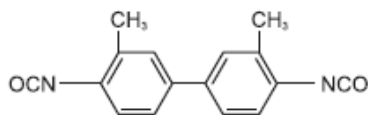
DOPO
CAS : 35948-25-5



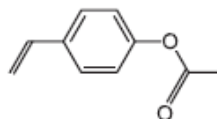
SP-AOI
CAS : 13641-96-8



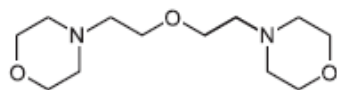
SP-MOI
CAS : 30674-80-7



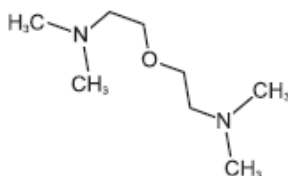
TODI
CAS : 91-97-4



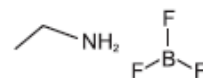
4-Acetoxystyrene
CAS : 2628-16-2



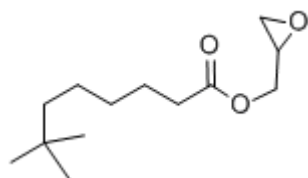
DMDEE
CAS : 6425-39-4



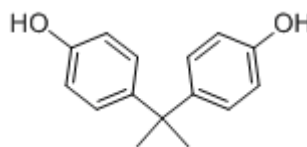
BDMAEE
CAS : 3033-62-3



BF3
CAS : 75-23-0



CARDURA E-10P
CAS : 26761-45-5



Bisphenol A
CAS : 80-05-7

Why **seechem** ? i n t e r n a t i o n a l

With our market intelligence and international network of Partners,
We can provide real advantage to the composites Industry.

For further information, Please visit our website at www.seechem.com

We don't neglect even tiny inquiry.

Sales & Marketing Division

Seoul Office /
+82 2 6241 0288 (Office)
mail@seechem.com

International Sales Division

+82 2 6241 0214 (Office)
seechem@gmail.com

SEECHEM International
ROOM 1941, Rosedale , 280 Gwangpyeong road
Gangnam-gu, Seoul 135-744, ROK